



THE VILLAGE AT LONGS

Now Selling

A Natural Gas Community



NEW HOMES FROM THE LOW \$300s

Welcome to The Village at Longs. This exciting community is conveniently located close to all that the Grand Strand area offers. Shopping, Entertainment, World-Class Golf Courses, and Much More! The Village at Longs is a Natural-Gas Community, bringing you all of the comforts and benefits of Natural Gas. Call us today to schedule a time to view our available models and all that The Village at Longs offers!

Community Highlights

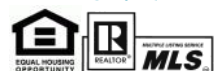
- ◆ Low Monthly HOA
- ◆ Minutes To Hwy 9 & Hwy 31
- ◆ Water View & Privacy Lots
- ◆ Home Customization Available
- ◆ 3, 4 & 5 Bedroom Models Available
- ◆ Natural-Gas Community

843.957.0893 - Kevin Crawford, Sales Agent

kcrow6785@yahoo.com

Sales Center: 117 Lakota Loop, Longs, SC 29568


**BEVERLY
HOMES**
Building Lifestyles





THE VILLAGE AT LONGS

Standard Features

Classic Finishing Touches

- Smooth Finish Drywall Ceilings throughout, Including Garage
- Fully Finished, Painted, & Trimmed Garage
- Garage Attic Space Floored for Storage & Drop Down Stair Access (Per Plan)
- 9' Ceilings on 1st Floor w/ 8' on Top Floor (Per Plan)
- Vaulted & Tray Ceilings (Per Plan)
- Select Vinyl Floorings in Wet Areas
- Upgraded **Shaw**® Stain Resistant Carpet w/ 6lb Rebound Padding in Bedrooms, Living, Hallways, & Bonus rooms
- Upgraded Trim Package, including 3.25 Decorative Base Board, 2 1/4" Casing, & Arched Openings (Per Plan)
- Decorative Cheyenne-Style Design Interior Doors
- Distinctive 6 Panel Door from the Garage into the Home & Front Door
- Brushed Nickel Hardware on All Interior Doors
- Walk-In Closets w/ Ventilated Closet Shelving, Including 1 Double Row in Master Bedrooms
- Decorative Chrome or Brushed Nickel Glass Light Fixtures (Per Plan)
- White Toggle Switches
- Pre-Wired Phone & Internet Locations – All Bedrooms & Kitchen (Per Plan)
- Pre-Wired Cable Locations – All Bedrooms & Living Area (Per Plan)
- Fans in Master Bedroom, Living Room, & Porches (Per Plan)

Designer Kitchens

- **Frigidaire**® Energy Saving Stainless Steel Appliance Package, including Direct Vent Space Saver Microwave, Multi-Cycle Dishwasher, & Gas Top Range w/ Self-Cleaning Oven
- **Aristokraft**™ Profiled Birch Cabinets w/ Gunmetal Hardware
- Ice Maker Connection
- High Quality Formica w/ Stainless Steel Sink w/ Detached Faucet & Sprayer
- 1/3 Horsepower Energy Efficient Garbage Disposal
- Recessed Lighting Package in Kitchen

Relaxing Baths

- **Aristokraft**™ Decorative Vanity Cabinets
- Durable Cultured Marble Countertops
- Elongated Toilets
- Executive Height Vanities in All Bathrooms
- Anti-Scald Shower Faucets
- 5' Extra Large Showers w/ Seat (s)
- Linen Closets (Per Plan)
- Vented Exhaust Fans in All Baths
- Decorative Towel Rods & Toilet Paper Holders
- Full-Length Vanity Mirrors

“Ask Your Sales Consultant about Custom Home Changes to Make your New Home Truly Yours!”



Your Home's Exterior

- Front Entry 2 Car Steel Reinforced Garage Door w/ **Liftmaster™** Door Lift w/ **MYQ Connectivity** for Mobile Operation
- **Royal™** Low Maintenance Premium Vinyl Siding, Providing a Long-Lasting, Easy-To-Clean Exterior
- **GAF Timberline™** High Performance Architectural Shingles
- Covered Front & Rear Porches (Per Plan)
- Maintenance Free Soffits & Fascia
- Professionally Designed Landscape Package to Include Sodded Yards (14 Pallet Max) & Mulched Beds (Per Landscape Plan)
- Exterior Weatherproof GFI Protected Electrical Outlets (Per Plan)
- Concrete Walkways & Driveways
- Covered Lanais w/ Ceiling Fan Kit (Per Plan)
- Grilling-Sized Patio (Per Plan)
- 2 Hose Bibs Included (One on Each Side of Home)
- Shutters on Front Windows (Per Plan)
- Water Main Shutoff Valve Located in the Garage
- Fiberglass Insulated Entry Door w/ Brushed Nickel Handle set
- Cluster Mailboxes Located throughout Community

Dependable Warranties

- **Sentricon™** Termite Colony Elimination System
- Full-Time Beverly Homes Customer Service Dept.
- One-Year Coverage on Materials & Workmanship**
- Pre-Closing Homeowner Orientation

Energy Efficient Designs and Quality Construction

- **YKK™ Styleview** Low E Windows & Patio Doors; Insulated Glass w/ Screens
- 14 SEER Central Air Conditioning w/ Energy-Efficient Gas Furnace; Space Conditioned Design & Accurate Load Calculation for HVAC Comfort
- Extended 10 Year Warranty Option on HVAC Equipment
- Energy-Efficient **Rinnai™** Tankless Hot Water Heater
- Washer & Dryer Hook-Up w/ Dryer Vent
- Fiberglass Insulation: Exterior Sidewalls R-13 or R- 19 (Per Plan)
- R-30 Ceiling Insulation, Keeping You Cool in Summer & Warm in Winter
- All Walls Framed 16" on Centers
- 200 Amp Electrical Service w/ Copper Wiring
- Digital Thermostat
- True Engineered Roof Truss System
- **Homeguard™** High Performance Barrier to guard against water, moisture, & air filtration
- Soil Compaction Tests before Concrete Placement
- Monolithic Slab that Provides a Solid Foundation
- All Building Plans — Engineer Sealed

Home Security & Safety

- Security Deadbolt Locks & Handle Sets on Exterior Doors (Per Plan)
- Smoke Detectors
- Tempered Glass Windows (Per Code)
- Flood Lighting on Front & Rear of Home w/ Coach Lights on Both Sides of Garage Door
- Pre-Wired for Security System; See Sales Consultant for Available Packages & Add-Ons.

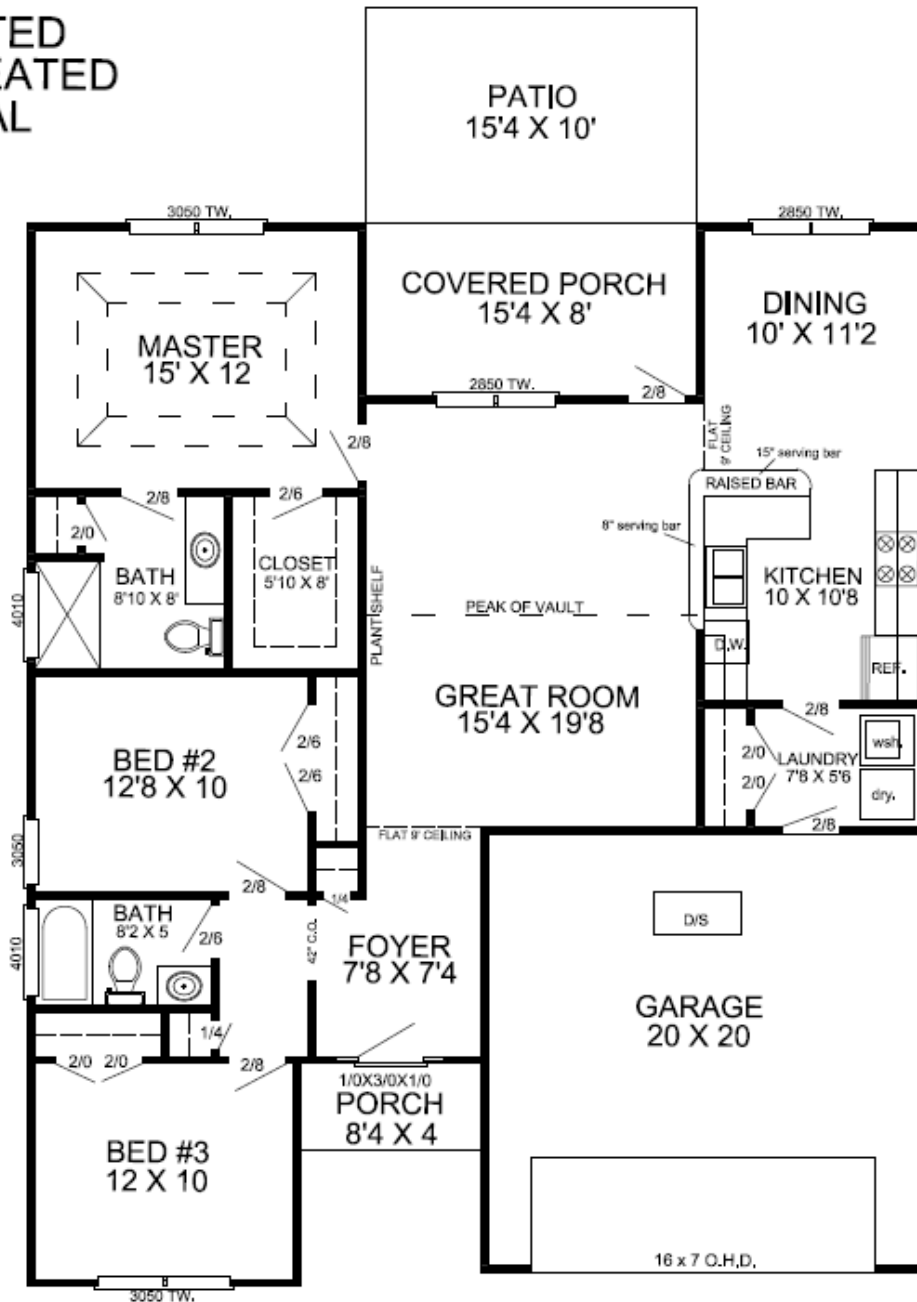
Note: Beverly Homes offers Home Customization & Upgrades. Please contact:

Kevin Crawford | 843.957.0893



The Oak II

THE OAK II
 1416 HEATED
 573 UN HEATED
 1989 TOTAL





The Busbee

THE BUSBEE
 1437 HEATED
 635 UN HEATED
 2072 TOTAL

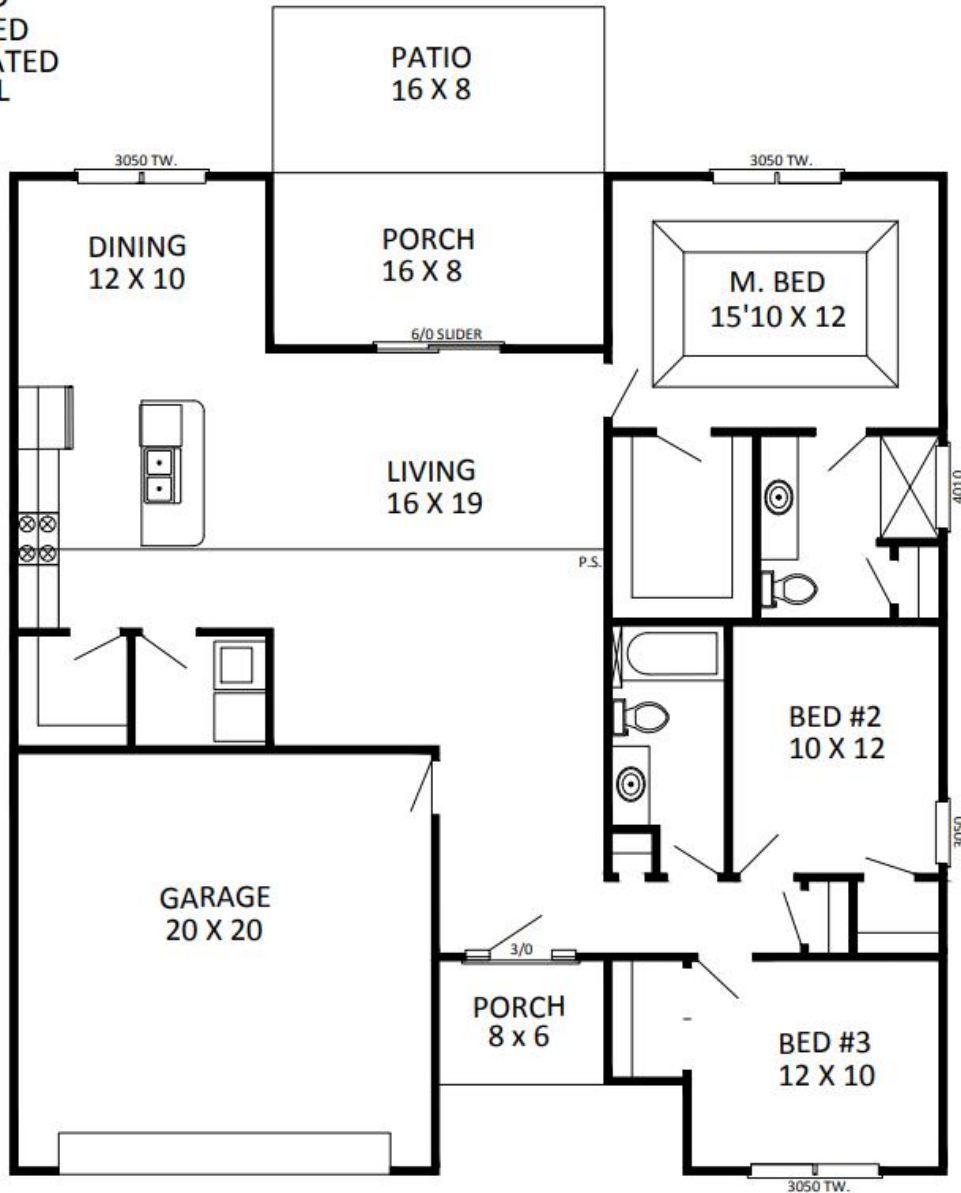


Beverly Homes is an Equal Housing Opportunity Builder and a member of the Coastal Carolinas Association of REALTORS®. Photography, Design, and Details are for illustrative purposes only and may vary. Community and home information, including Features, Pricing, Specifications, and Dimensions that are described or depicted, are conceptual and proposed and are subject to change and sale at any time without notice or obligation.



The Sherwood

SHERWOOD
 1534 HEATED
 598 UNHEATED
 2132 TOTAL

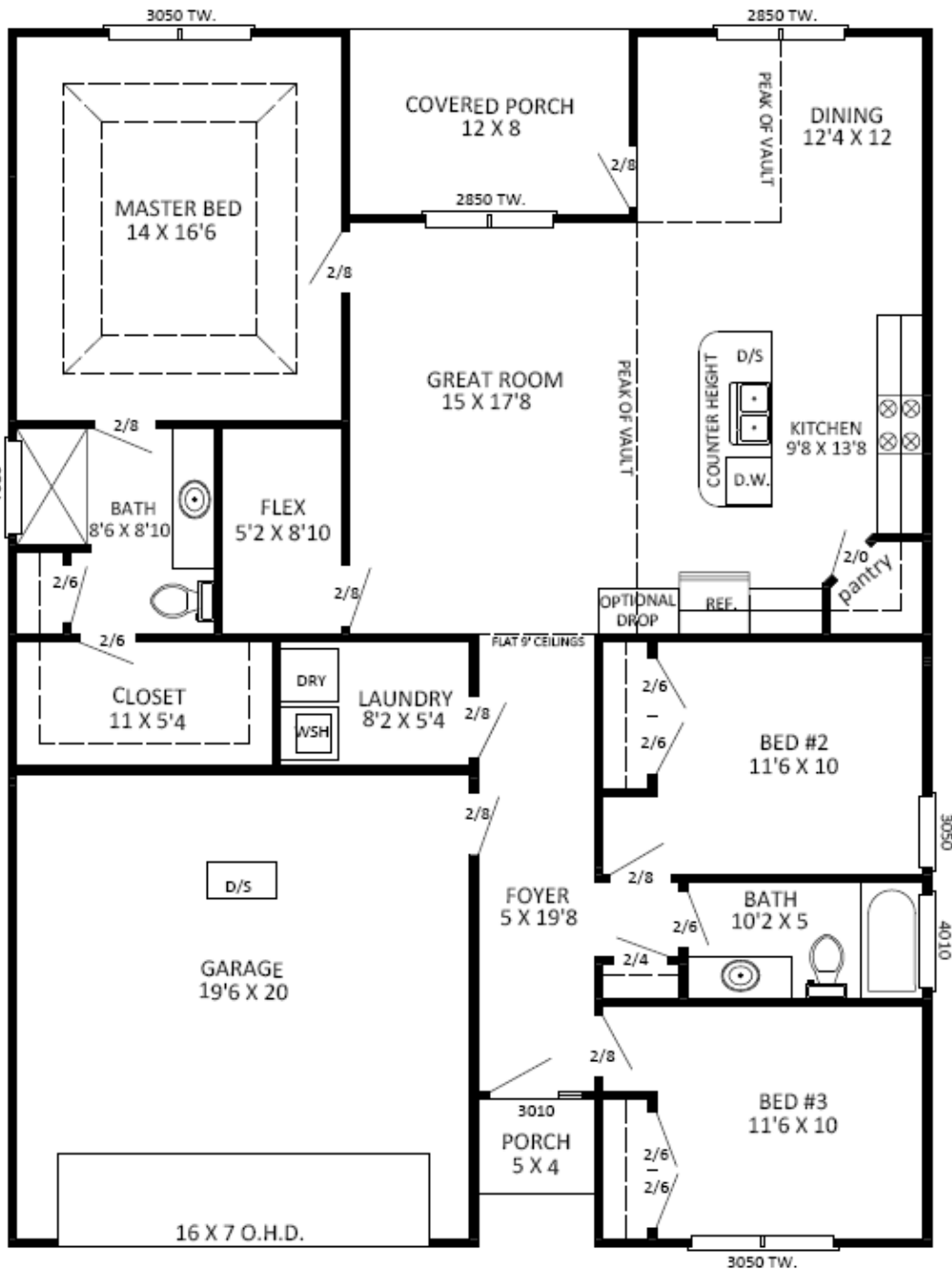


Beverly Homes is an Equal Housing Opportunity Builder and a member of the Coastal Carolinas Association of REALTORS®. Photography, Design, and Details are for illustrative purposes only and may vary. Community and home information, including Features, Pricing, Specifications, and Dimensions that are described or depicted, are conceptual and proposed and are subject to change and sale at any time without notice or obligation.



The Topsail

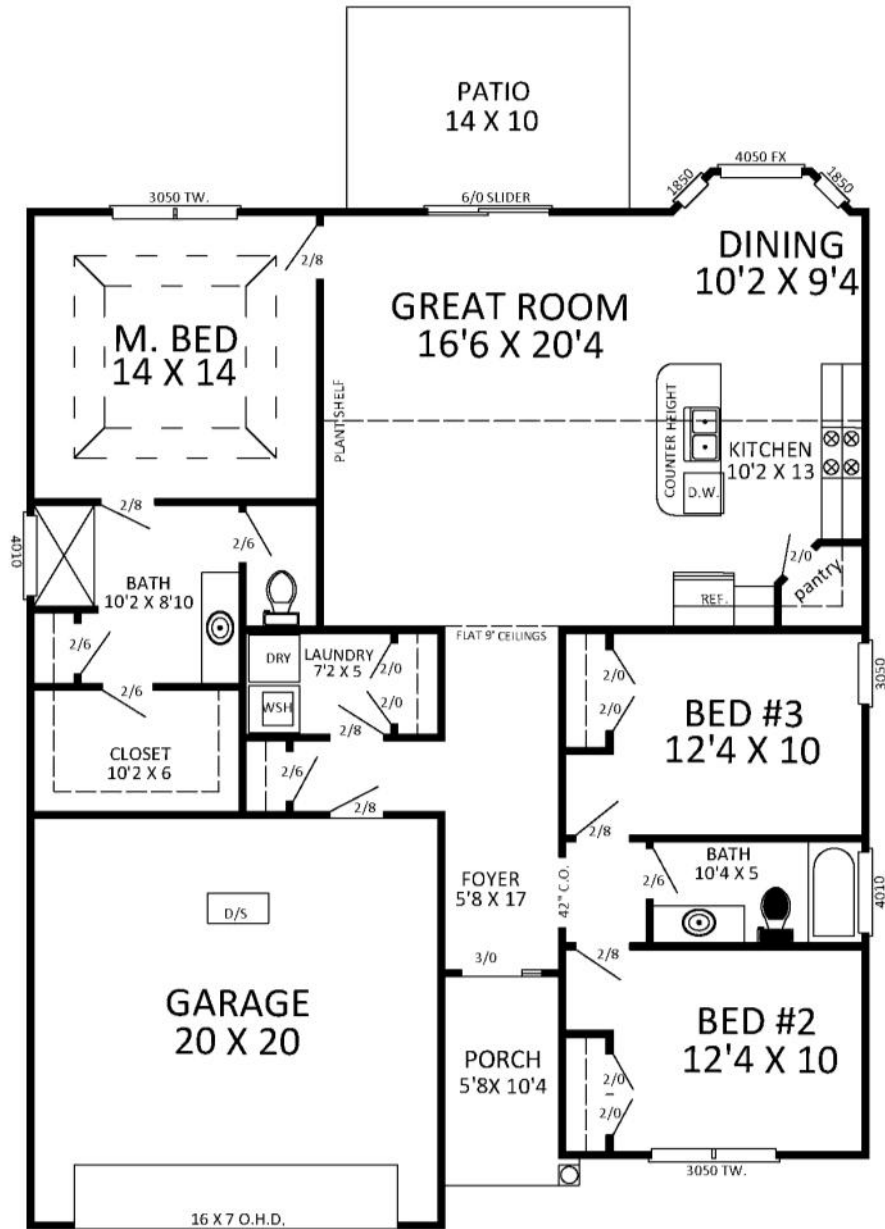
Topsail
 1543 HEATED
 521 UNHEATED
 2064 TOTAL



Beverly Homes is an Equal Housing Opportunity Builder and a member of the Coastal Carolinas Association of REALTORS®. Photography, Design, and Details are for illustrative purposes only and may vary. Community and home information, including Features, Pricing, Specifications, and Dimensions that are described or depicted, are conceptual and proposed and are subject to change and sale at any time without notice or obligation.



The Seascape

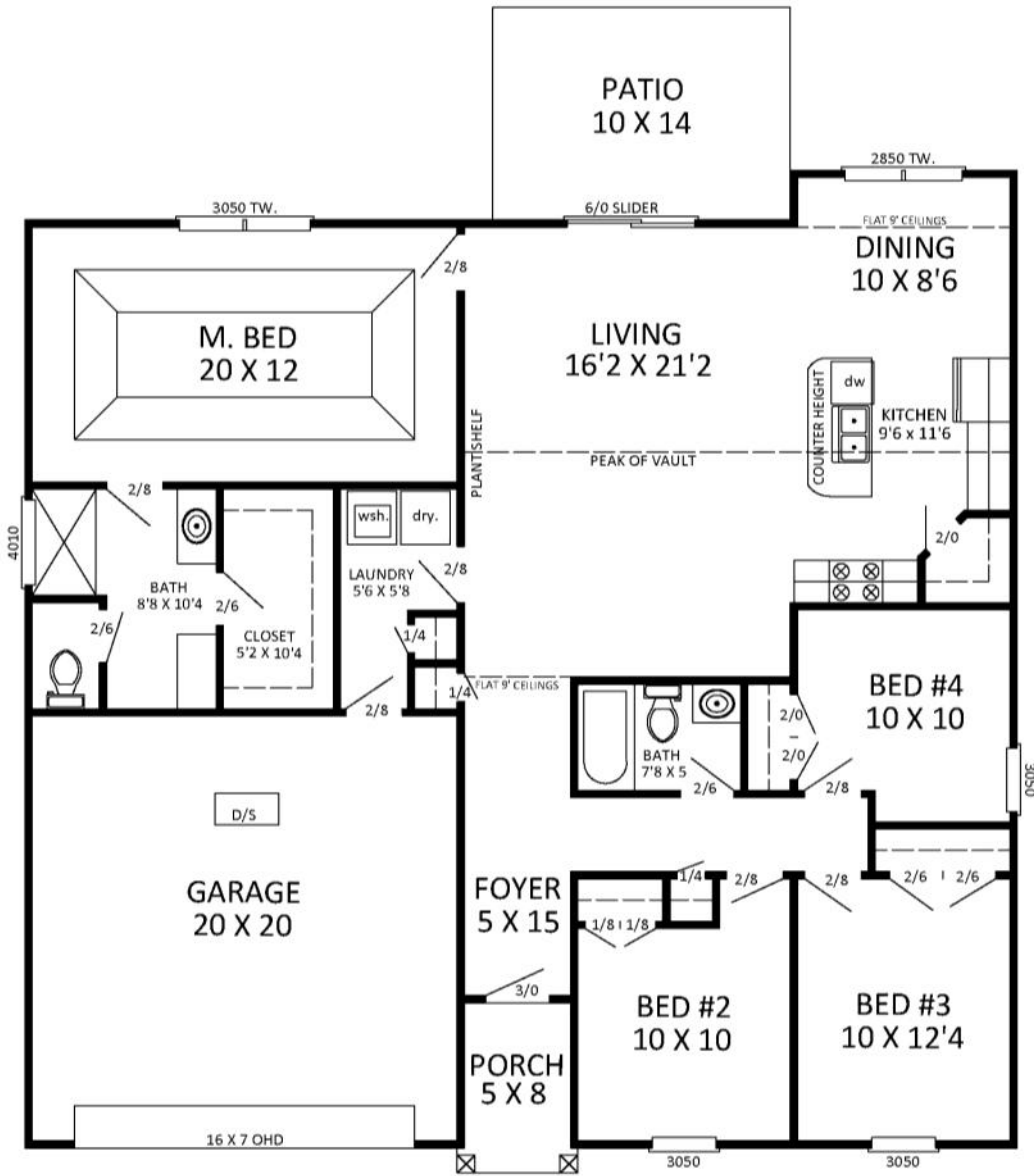


SEASCAPE
 1576 HEATED
 478 UNHEATED
 2054 TOTAL





The Parkside



PARKSIDE
 1613 HEATED
 457 UNHEATED
 2070 TOTAL

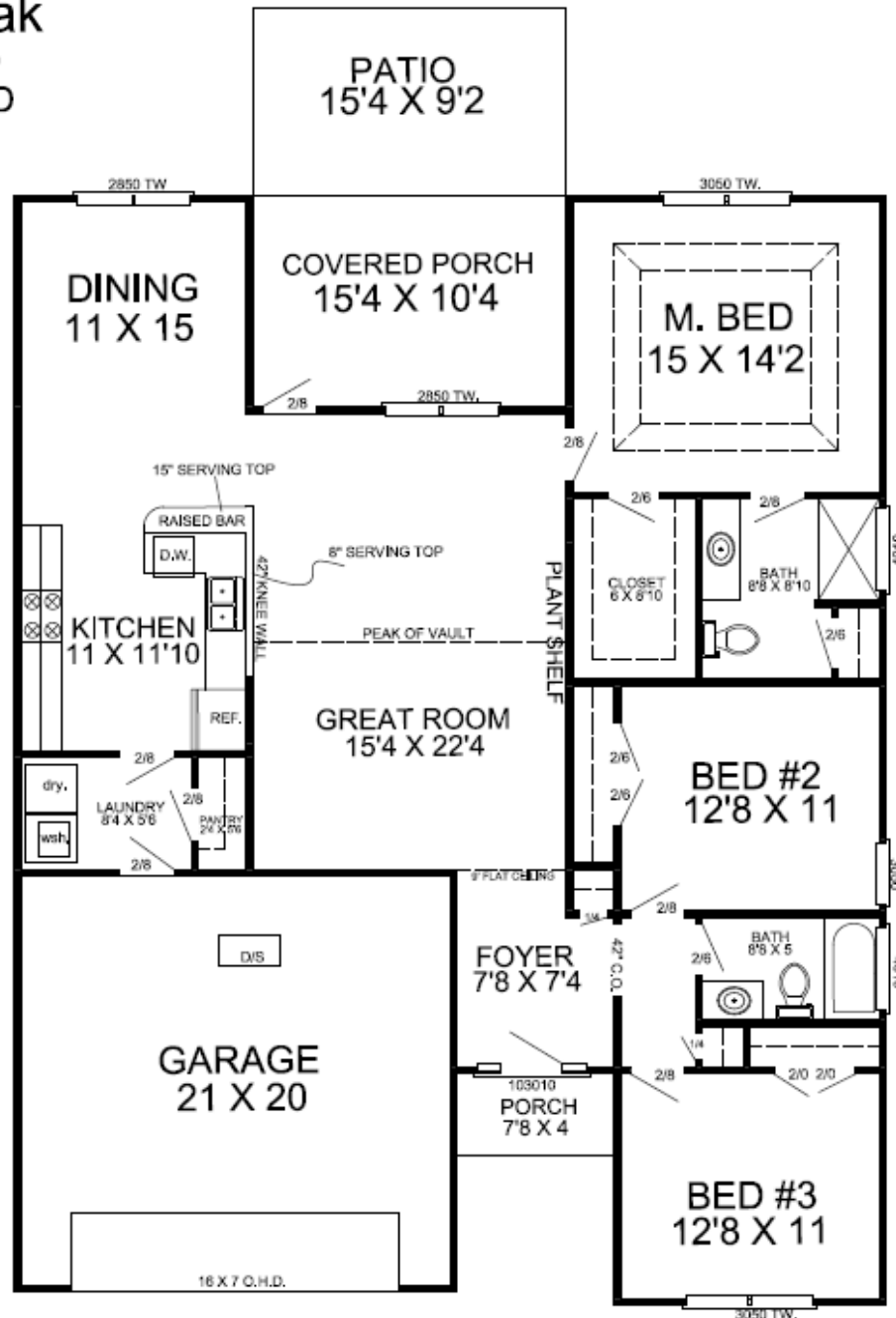


Beverly Homes is an Equal Housing Opportunity Builder and a member of the Coastal Carolinas Association of REALTORS®. Photography, Design, and Details are for illustrative purposes only and may vary. Community and home information, including Features, Pricing, Specifications, and Dimensions that are described or depicted, are conceptual and proposed and are subject to change and sale at any time without notice or obligation.



The Live Oak

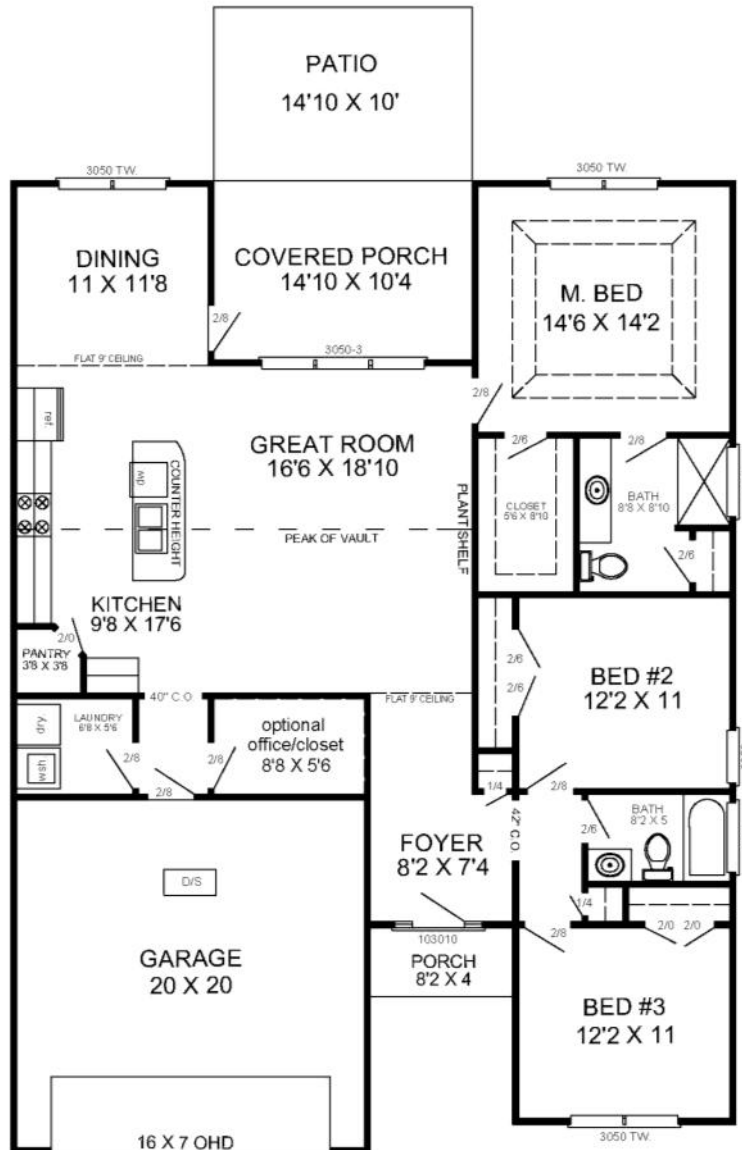
The Live Oak
 1621 HEATED
 626 UNHEATED
 2247 TOTAL



Beverly Homes is an Equal Housing Opportunity Builder and a member of the Coastal Carolinas Association of REALTORS®. Photography, Design, and Details are for illustrative purposes only and may vary. Community and home information, including Features, Pricing, Specifications, and Dimensions that are described or depicted, are conceptual and proposed and are subject to change and sale at any time without notice or obligation.



The Capers

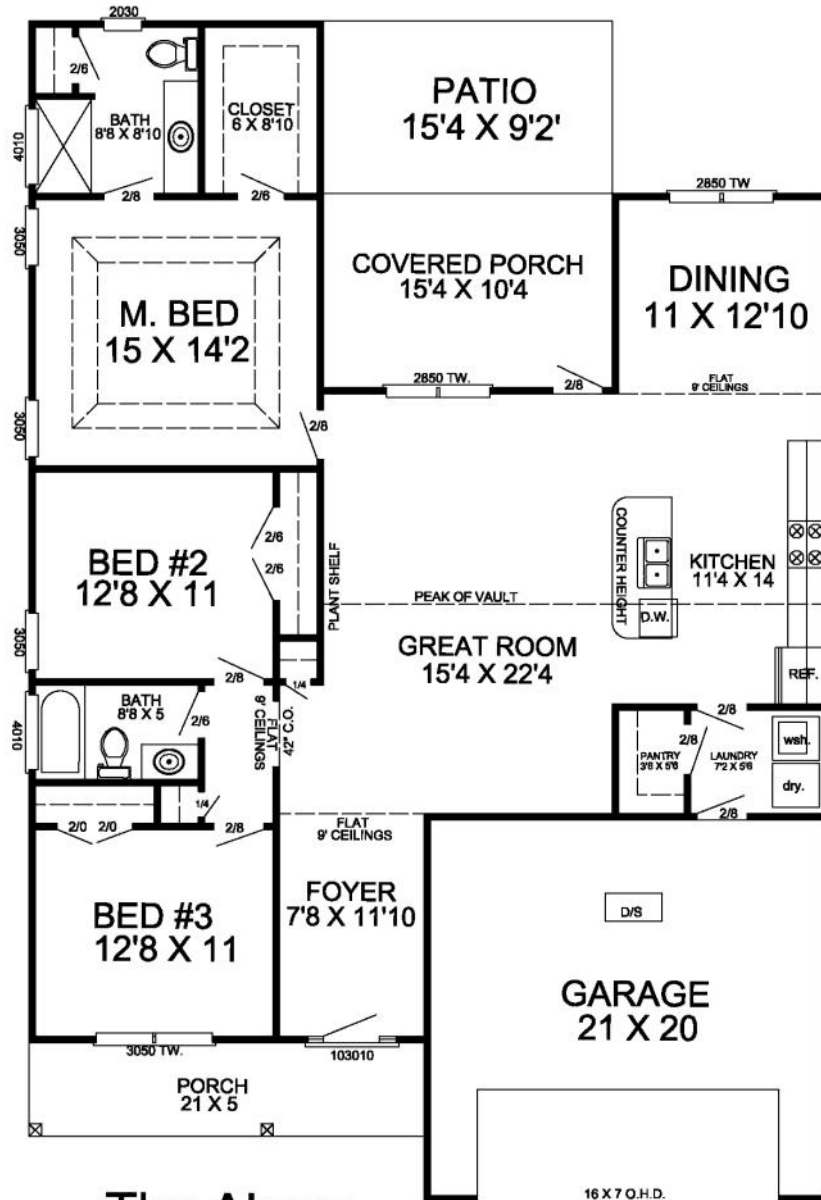


The Capers
 1635 HEATED
 603 UNHEATED
 2238 TOTAL





The Abaco

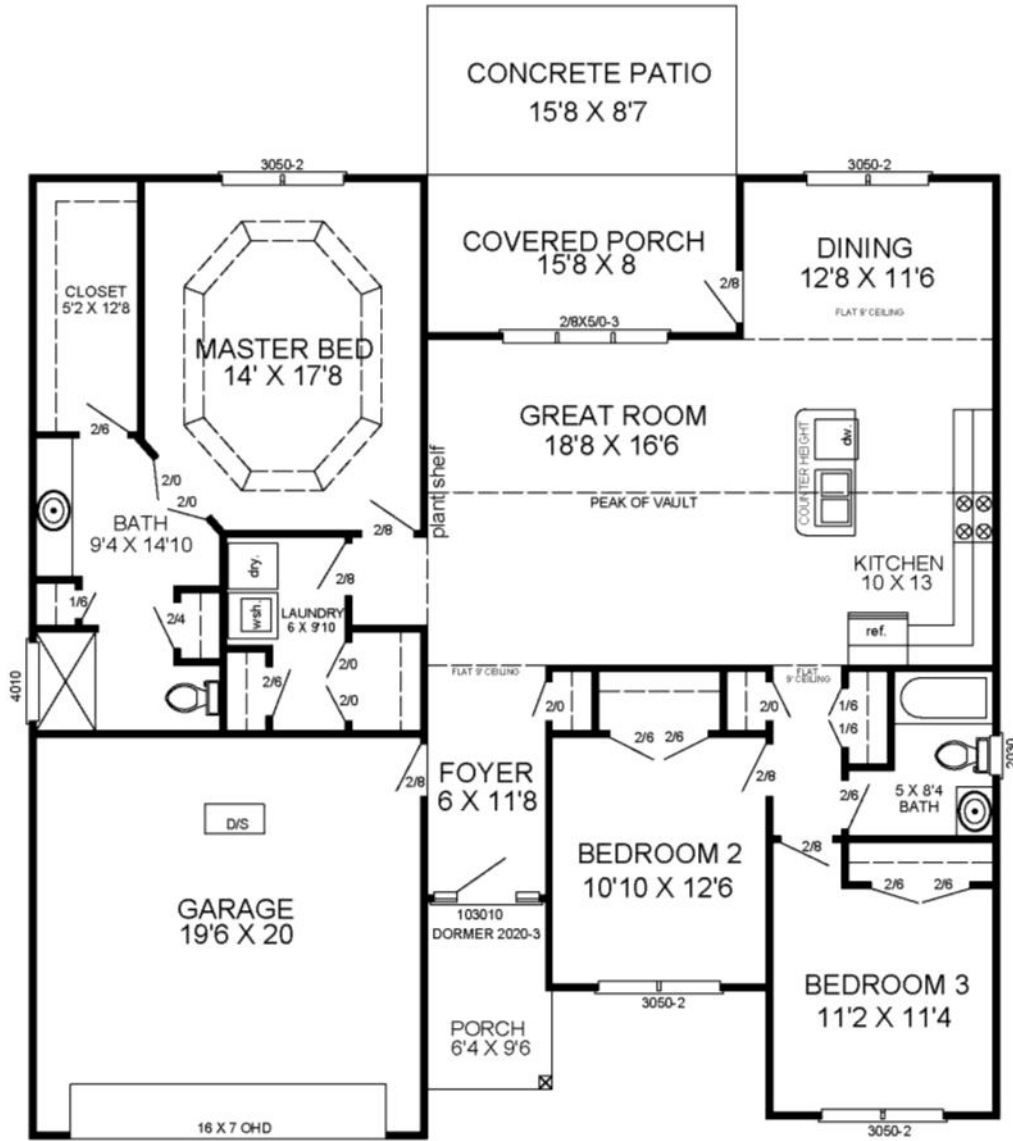


The Abaco
 1660 HEATED
 700 UNHEATED
 2360 TOTAL





The Sanibel



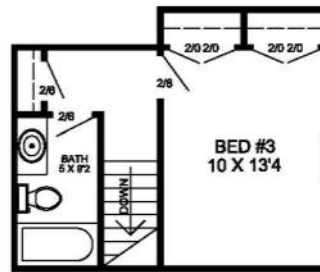
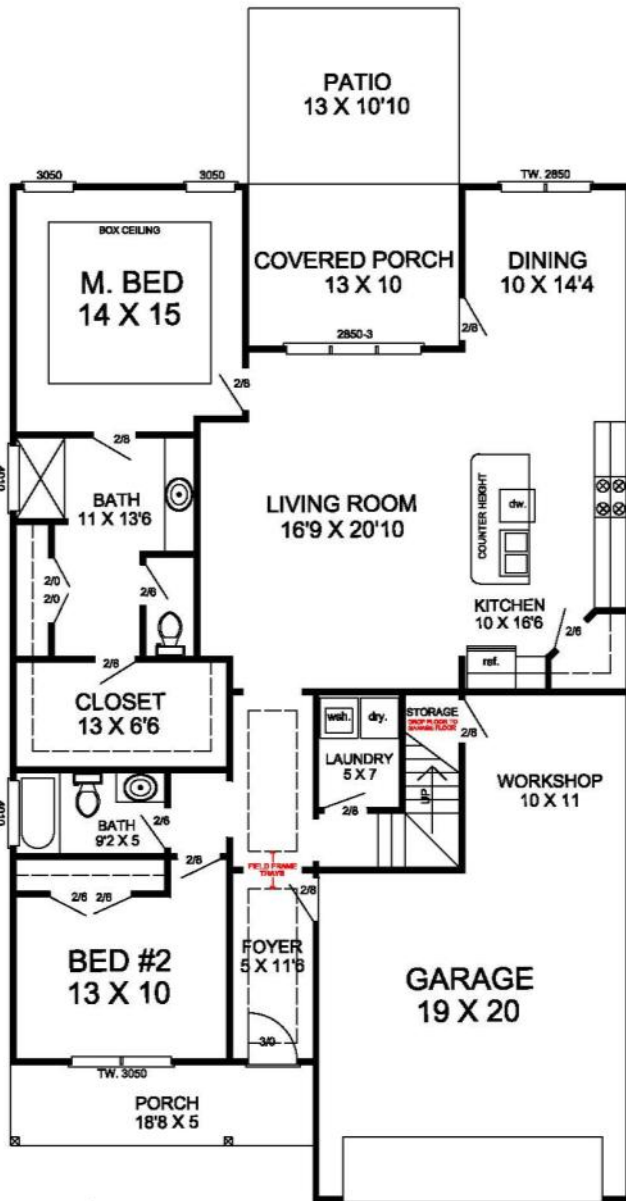
THE SANIBEL
 1701 MAIN FLOOR
 591 UNHEATED
 2292 TOTAL



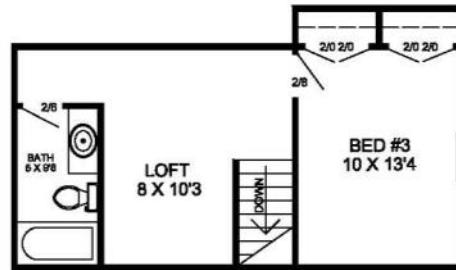
Beverly Homes is an Equal Housing Opportunity Builder and a member of the Coastal Carolinas Association of REALTORS®. Photography, Design, and Details are for illustrative purposes only and may vary. Community and home information, including Features, Pricing, Specifications, and Dimensions that are described or depicted, are conceptual and proposed and are subject to change and sale at any time without notice or obligation.



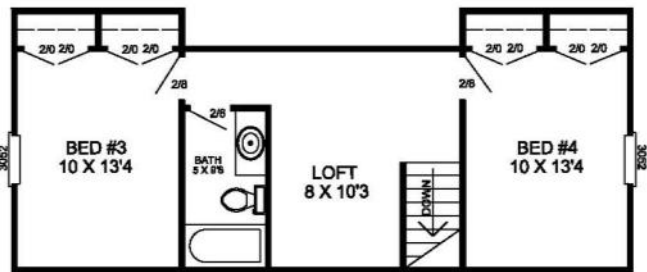
The Indigo



THE INDIGO (A)
 1610 LOWER HTD
 277 UPPER HTD
 733 UNHEATED
 2620 TOTAL



THE INDIGO (B)
 1610 LOWER HTD
 394 UPPER HTD
 733 UNHEATED
 2737 TOTAL



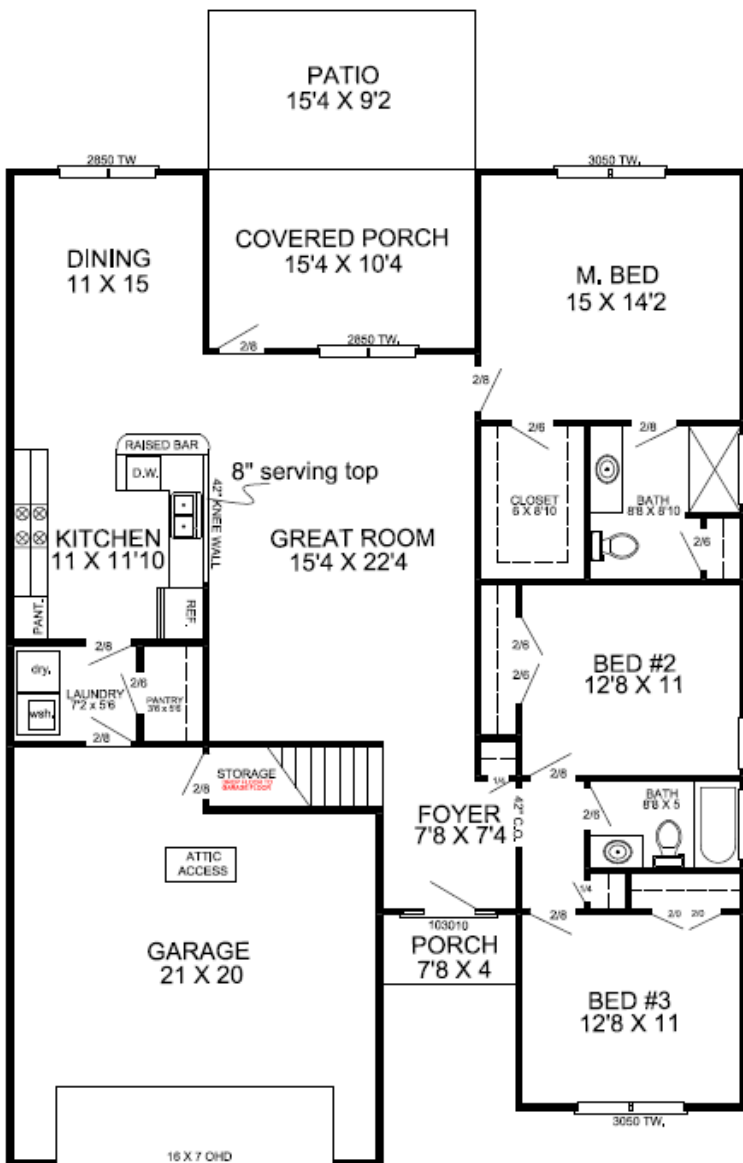
THE INDIGO (C)
 1610 LOWER HTD
 564 UPPER HTD
 733 UNHEATED
 2907 TOTAL





Live Oak II

Main Level



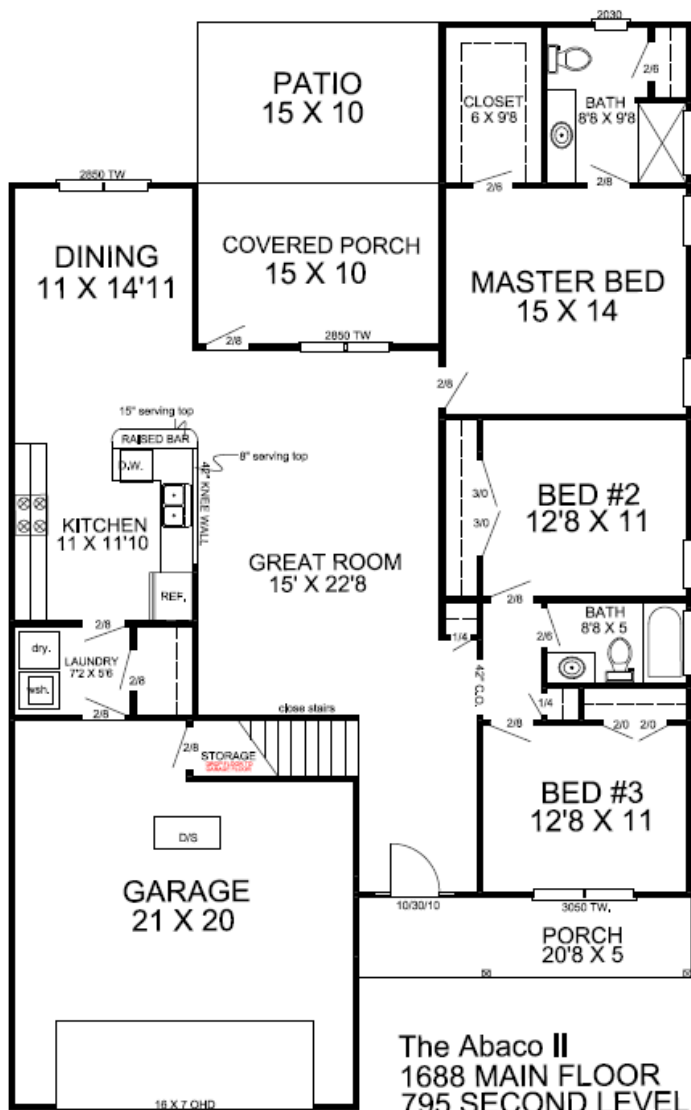
Second Level



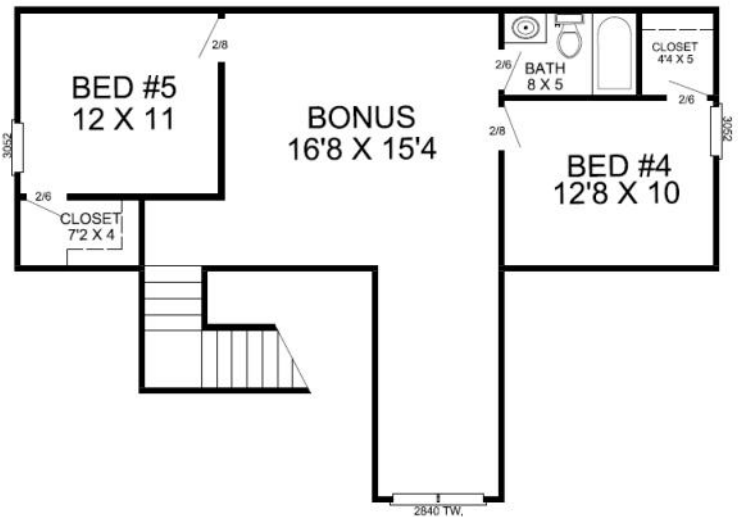


The Abaco II

Main Level



2nd Level



The Abaco II
 1688 MAIN FLOOR
 795 SECOND LEVEL
 734 UN HEATED
 3217 TOTAL

